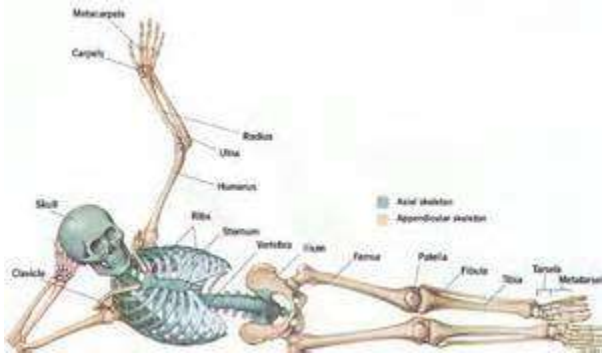


PTHA 1413

Functional Anatomy

Fall 2015

Faculty Information



Name: Tana Pipes
E-Mail: tpieps@odessa.edu
Phone: 432.335.6836
Office: HSB 103

Office Hours	
Campus Office Hours:	M & W: 10:30 - 11:30a M - W: 1:00 - 3:00p Th: 2:30 - 3:30p F: 9:00 - 10:00a
Online Office Hours:	n/a

About Your Instructor

“The thigh bone is connected to the knee bone! You do the Hokey Pokey and you turn yourself around” ... before you know it, you’ve learned all of the muscles’ actions, innervations, origins and insertions. “That’s what it’s all about!!!”

Preferred Method of Communication:

The best way to communicate with me outside of class is to leave a voicemail on my office phone at 432-335-6836 , an email at tpipes@odessa.edu ,o r visit my office.

Expectations for Engagement for Instructor:

As an instructor, I understand the importance of clear, timely communication with my students. In order to maintain sufficient communication, I will

- provide my contact information at the beginning of the syllabus;
- respond to all messages within 24 hours if received Monday through Thursday, and within 48 hours if received Friday through Sunday; and,
- notify students of any extended times that I will be unavailable and provide them with alternative contact information (for me or other PTA faculty) during the time I am unavailable.

As an instructor, I understand that my students will work to the best of their abilities to fulfill the course requirements. In order to help them in this area, I will

- provide clear information about grading policies and assignment requirements in the course syllabus, and

- communicate any changes to assignments and/or to the course calendar to students as quickly as possible.

As an instructor, I understand that I need to provide regular, timely feedback to students about their performance in the course. To keep students informed about their progress, I will

- post grades for discussion postings within one week of the discussion thread closing.
- provide grades for major assignments within 2 weeks of the due date or at least 3 days before the next major assignment is due, whichever comes first.

Textbook Information and Required Hardware/Software

<i>ISBN-13</i>	<i>AUTHOR</i>	<i>TITLE</i>	<i>EDITION/YEAR</i>	<i>PUBLISHER</i>
978-0803623637	Lippert	Clinical Kinesiology and Anatomy	5 th /2011	F A Davis
*978-0-9829786-7-2 Volume 1 *= <i>recommended</i> / optional	Biel	Trail Guide to the Body Flash Cards 5th Edition Volume 1 - Skeletal System Bones Joints Ligaments	5 th /2014	Books Of Discovery
*978-0-9829786-8-9 Volume 2 *= <i>recommended</i> / optional	Biel	Trail Guide to the Body Flash Cards 5th Edition Volume 2 - Muscles of the Human Body	5 th /2014	Books Of Discovery
978-0-9829786-5-8	Biel	Trail Guide to the Body Textbook	5 th /2010	Books of Discovery
* 978-0-9829786-6-5 *= <i>recommended</i> / optional	Biel	Trail Guide to the Body Student Workbook	5 th /2014	Books of Discovery
978-1-6083175-6-1	Agur, et al	Grants Atlas of Anatomy	13 th /2012	LWW

Hardware:

n/a

Software:

n/a

Websites:

See links provided on Blackboard

Methods of Presentation:

Lectures, reading assignments, videos, discussion, and outside projects and assignments.

Information About the Course

Course Description

The course explains and correlates the relationship of the musculoskeletal and neuromuscular systems to normal and abnormal movement. Provides the student with a working knowledge of the human musculoskeletal and neuromuscular systems and an understanding of how these systems interact to produce efficient human movement.

Objectives:

Given the classroom and/or laboratory sessions, textbook/s, personal notes, handouts and other material, the student should be able to complete this course and be able to:

- 1.0 Identify and analyze actions and interactions of selected muscles and joints of the human body.
- 2.0 Identify and analyze actions and interactions of muscles and joints of the human body during gait.
- 3.0 Identify and analyze actions of central and peripheral neuromuscular control mechanisms.

Competencies:

- 1 To demonstrate competency in identifying and analyzing actions and interactions of selected muscles and joints of the human body, the student should be able to:
 - 1.1 Define terms related to functional anatomy.
 - 1.2 Define the anatomical subdivisions of the body.
 - 1.3 *Define and describe the rationale for anatomical position.
 - 1.4 Identify terms of direction and relationship of body structures.
 - 1.5 Identify the planes of the body.
 - 1.6 *Identify and explain terms of movement related to the function of the musculoskeletal system.
 - 1.7 *Identify lever and force systems and relate them to the function of the musculoskeletal system.
 - 1.8 *Identify the types, configurations, and specialized characteristics of connective tissue.
 - 1.9 *Identify the types, configurations, and specialized characteristics of muscle tissue.
 - 1.10*Identify the types, configurations, and specialized characteristics of nervous tissue.
 - 1.11*Identify and describe types of joints.
 - 1.12*List and describe types of muscle contraction / muscle tension and relate them to the function of the musculoskeletal system.
 - 1.13*Define and differentiate normal resting tone, muscle spasm, and spasticity.
 - 1.14*Define and describe active and passive insufficiency and relate them to the function of the musculoskeletal system.
 - 1.15*Define and explain the differing roles muscles can assume in producing movement.
 - 1.16*Identify and describe central and peripheral neuromuscular control mechanisms and relate them to the function of the musculoskeletal system.
 - 1.17*Identify joint structure; normal joint range of motion, selected ligament location and function; muscle origin, insertion, innervation and action; and unique characteristics of the joint complexes listed below.
 - a. Elbow and Forearm
 - b. Wrist and Hand
 - c. Shoulder
 - d. Knee
 - e. Pelvis and Hip
 - f. Ankle and Foot
 - g. Back and Neck
 - h. Head
 - i. Thorax
 - 1.18*Palpate selected bony landmarks, ligaments, and muscle bellies, origins, and insertions of the joint complexes listed in 1.17.
 - 1.19*Recognize results of muscle atrophy on surface anatomy.

- 2.0 To demonstrate competency in identifying and analyzing actions and interactions of muscles and joints of the human body during gait, the student should be able to:
 - 2.1 Define terms related to gait.
 - 2.2 Identify and describe the phases of gait.
 - 2.3 Identify joint actions during each phase of gait.
 - 2.4 Describe floor reaction force, gravity, and momentum and describe their relation to muscle function during gait.
 - 2.5 Deduce the muscles that are active during each phase of gait.
- 3.0 To demonstrate competency in Identification and analysis actions of central and peripheral neuromuscular control mechanisms, the student should be able to:
 - 3.1 Define terms related to neuromuscular control.
 - 3.2 Identify and describe the components of neuromuscular control.
 - 3.3 Demonstrate understanding mechanisms of neuromuscular control.
 - 3.4 Deduce subsequent issues related to injury or interruptions of the neuromuscular mechanisms.

Course Prerequisites:

BIOL 2401, BIOL 2402 Source: Odessa College Catalog of Courses 2015-2016 , page 221-224

Corequisites: PTHA 1201, 1305

Course Topics:

INTRODUCTION

- A. Terminology
- B. Anatomical Position
- C. Planes of the Body

II. LEVERS AND MUSCULAR ACTION

- A. Components
- B. Classes

III. TISSUES OF THE BODY

- A. Epithelial
- B. Connective
 1. Fibrous
 2. Cartilage
 3. Bone
- C. Muscular
 1. Anatomy
 2. Contractile Properties
- D. Nervous Tissue
 1. Anatomy
 2. Conduction

IV. MUSCULOSKELETAL SYSTEM

- A. Attachments
- B. Fiber Arrangement
- C. Types of Contraction
- D. Muscle Actions

V. CENTRAL NEUROMUSCULAR CONTROL

- A. Brain
- B. Spinal Cord

VI. PERIPHERAL NEUROMUSCULAR CONTROL

- A. Nerve Supply
- B. Muscle Spindle
- C. Golgi Tendon Organ

VII. THE UPPER LIMB

- A. Elbow/Forearm
 1. Bones

- 2. Joints
- 3. Muscles
- 4. Actions
- B. Wrist/Hand
 - 1. Bones
 - 2. Joints
 - 3. Muscles
 - 4. Actions
- C. Shoulder
 - 1. Bones
 - 2. Joints
 - 3. Muscles
 - 4. Actions

VIII. THE LOWER LIMB

- A. Knee
 - 1. Bones
 - 2. Joints
 - 3. Muscles
 - 4. Actions
- B. Hip
 - 1. Bones
 - 2. Joints
 - 3. Muscles
 - 4. Actions
- C. Ankle/Foot
 - 1. Bones
 - 2. Joints
 - 3. Muscles
 - 4. Actions

IX. THE HEAD, NECK, & TRUNK

- A. Bones
- B. Joints
- C. Muscles
- D. Actions

X. RESPIRATION

- A. Bones/Joints
- B. Muscles
- C. Actions

XII. GAIT

- A. Upright Posture
- B. Phases
- C. Joint and Muscle Actions
- Deviations

**Indicates integrated, core curriculum skills (math, reading, writing, communication, technological literacy and/or critical thinking)*

Grading

<i>Type of Assignment</i>	<i>Percentage/Points</i>	<i>Learning Objective</i>
---------------------------	--------------------------	---------------------------

Unit Exams	40%	1-2
WS/LABS	10%	1-2
Quizzes	10%	1-2
Lab Practicals	15%	1-2
Final Exam	25%	1-2
	100%	TOTAL

Grading Scale:

“A” = 90-100

“B” = 80-89

“C” = 70-79

“D” = 60-69

“F” = 0-59

Student Course Participation

As a student, I understand that I am responsible for keeping up with the course. To help with this, I will

- identify alternative computer and internet access in case my primary computer crashes or my internet service is unavailable;
- recognize that the college provides free wi-fi and computer labs during regular campus hours to help me with accessing my course; and,
- understand that my instructor does not have to accept my technical issues as a legitimate reason for late or missing work if my equipment or service is unreliable.

As a student, I understand that it is my responsibility to communicate quickly with the instructor any issue or emergency that will impact my involvement with or performance in the class. This includes, but is not limited to

- getting “kicked off” of the system during tests or quizzes;
- having trouble submitting assignments; and
- dealing with a traumatic personal event.

As a student, I understand that it is my responsibility to understand course material and requirements and to keep up with the course calendar. While my instructor is available for help and clarification, I will

- seek out help from my instructor and/or from tutors;
- ask questions if I don’t understand; and
- access my course several times during the week to keep up with assignments and announcements.

As a student, I understand that I will have the opportunity to provide feedback on my experience in this course through an end-of-course Student Evaluation of Instruction (SEI).

Course Policies

Disclaimer

This syllabus is tentative and subject to change in any part at the discretion of the instructor. Any changes will be in accordance with Odessa College policies. Students will be notified of changes, if any, in a timely manner.

Original Effort

The work submitted for this course must be original work prepared by the student enrolled in this course.

Course Alignment with Industry Standards

This course (Functional Anatomy/PTHA 1413/ Fall) has been identified as a course by Career, Technical, and Workforce Education as one in which teaching and learning strategies adopted by AVID will be implemented via Lectures, demonstrations, laboratory practice, reading assignments, discussions, videos, and outside projects and assignments. As a student in The PTA program, you will be expected to develop an understanding of the strategies, to model the strategies, to maintain fidelity of implementation, and to examine how these strategies may impact your effectiveness as a professional in your chosen area of occupation, either through coursework or practicum experience as outlined by the course instructor. CAPTE accreditation of the PTA program can be found on the PTA Program website www.odessa.edu/dept/pta

Digital Protocol

Cell phones must be placed on *silent* mode and are to be accessed in emergency cases only. The use of laptops or any other digital device is permitted in order to facilitate note-taking relative to instruction with instructor permission only. Any written assignments may be submitted electronically on Blackboard. **The electronic recording of the time on Blackboard will be considered the time of assignment submission. Take necessary steps to ensure that your assignments are submitted on "Blackboard" time.** Back-up and/or additional copies of all assignments submitted is encouraged. **Computers/printers are available to OC students in the LRC (301-303); therefore, not having access to a computer due to technical issues (crash; corrupted files) will not be considered as an acceptable reason for not completing assignments.** If there is a loss of server connection with Odessa College due to maintenance, then an email will be sent to student with pertinent information and status reports. Assignments submitted electronically need to be **WORD document (doc or docx).**

Attendance Policy

Regular attendance at lecture and lab is essential and has a direct effect on the final grade that a student earns in class. Non-attendance on the part of a student may result in grade penalty or may lead to dismissal from the program.

A student should attend all lecture and laboratory sessions. Habitual or patterned absenteeism in lecture or lab will not be tolerated. As soon as such a problem is identified, the student will be required to meet with the faculty to determine a course of action and, if the problem is not corrected, the student will be subject to dismissal from the program. **Absences in laboratory sessions are particularly problematic because of the lost opportunity to practice skills; therefore, students will be penalized for missing more than one lab session per semester. Should a student miss more than one lab session, one point for each missed session will be deducted from the final course grade. All absences must be reported to the appropriate faculty member prior to the start of class.** If the faculty member cannot be reached directly, a voice mail message may be left. Failure to notify the faculty prior to an absence will affect the student's Professional Behaviors Assessment. **3 unexcused absences will result in loss of 10 points from the student's final grade, at the discretion of the PTA instructor.**

AVID

Multiple AVID strategies are utilized in this course, including but not limited to JigSaw, Think-Pair-Share, Quick Write, Muddiest Point.

Grade Inquiry

It is the responsibility of the student to keep track of assignment submissions and grades. At any point, you are welcome to meet with the instructor to discuss your academic progress. Contact the instructor to schedule an appointment.

General Course Requirements

1. Attend class and participate.
2. Contribute and cooperate with civility.
3. **Submit assignments on time..** Please understand that this is a required course for the PTA program in order to prepare you for PTHA 2409 and PTHA 2201 as well as Acute, Ortho and Neuro Clinical Rotations. Quality work and active participation is expected and not to be negotiated. As a general policy, grades will be taken in class. Any written assignments or tests will be graded outside of class. You can expect feedback on assignments within a week's time. A minimum grade of a 70 is required to pass PTHA 1413

Incomplete Policy

An 'Incomplete' grade may be given only if:

1. The student has passed all completed work
2. If he/she has completed a minimum of 75% of the required coursework. A grade of an "I" will only be assigned when the conditions for completions have been discussed and agreed upon by the instructor and the student.
3. An Incomplete form is submitted

Course Schedule

Course Schedule is posted on Black Board. A hard copy is printed in course packet, and is tentative and subject to change.

Odessa College Policies

Tuition Discounts

The **"First Course is Free"** discount waives standard tuition and fees for the first 3 credit hours taken at Odessa College. The discount applies to high school graduates taking their first class at Odessa College as well as transfer students taking their first class at Odessa College.

The **"Academic Progress Discount"** provides a 10% tuition discount upon completion of 30 credit hours until reaching 45 credit hours. It provides a 20% discount upon completion of 45 credit hours until reaching 60 credit hours. Student must maintain a 2.0 GPA to remain eligible for the discount.

Academic Policies

Note that the OC Student Handbook states (page 32) that "[i]n cases of academic dishonesty, the instructor has the authority to impose appropriate scholastic penalties. Complaints or appeals of disciplinary sanctions may be filed in accordance with the college due process procedure. Copies of the college due process procedure are available in the office of The Director of Student Life (CC104)."

For more information on your rights and responsibilities as a student at Odessa College, please refer to the following: *The 411 of OC: Student Handbook 2015-2016; Student Rights & Responsibilities* <http://www.odessa.edu/dept/studenthandbook/handbook.pdf>

Scholastic Dishonesty

Scholastic dishonesty shall constitute a violation of these rules and regulations and is punishable as prescribed by board policies. Scholastic dishonesty shall include, but not be limited to, cheating on a test, plagiarism and collusion.

"Cheating on a test" shall include:

- Copying from another student's test paper
- Using test materials not authorized by the person administering the test.
- Collaborating with or seeking aid from another student during a test without permission from the test administrator.
- Knowingly using, buying, selling, stealing or soliciting, in whole or in part, the contents of an unadministered test.
- The unauthorized transporting or removal, in whole or in part, of the contents of the unadministered test.
- Substituting for another student, or permitting another student to substitute for one's self, to take a test.
- Bribing another person to obtain an unadministered test or information about an unadministered test.
- "Plagiarism" shall be defined as the appropriating, buying, receiving as a gift, or obtaining by any means another's work and the unacknowledged submission or incorporation of it in one's own written work.
- "Collusion" shall be defined as the unauthorized collaboration with another person in preparing written work for fulfillment of course requirements.

Special Populations/Disability Services/Learning Assistance

Odessa College complies with Section 504 of the Vocational Rehabilitation Act of 1973 and the Americans with Disabilities Act of 1990. If you have any special needs or issues pertaining to your access to and participation in this or any other class at Odessa College, please feel free to contact me to discuss your concerns. You may also call the Office of Disability services at 432-335-6861 to request assistance and accommodations.

Odessa College affirms that it will provide access to programs, services and activities to qualified individuals with known disabilities as required by **Section 504 of the Rehabilitation Act of 1973 and Title II of the Americans with Disabilities Act of 1990 (ADA)**, unless doing so poses an undue hardship or fundamentally alters the nature of the program or activity. Disabilities may include hearing, mobility or visual impairments as well as hidden disabilities such as chronic medical conditions (arthritis, cancer, diabetes, heart disease, kidney disorders, lupus, seizure disorders, etc.), learning disabilities or psychiatric or emotional disabilities. A student who comes to Odessa College with diagnosed disabilities which may interfere with learning may receive accommodations when the student requests them and submits proper documentation of the diagnosis. A Request for Accommodations form and guidelines for beginning the request process are available in the OC Help Center or on the Odessa College web site at <http://www.odessa.edu/dept/counseling/disabilities/index.htm>. The college strives to provide a complete and appropriate range of services for students with disabilities such as assistance with testing, registration, information on adaptive and assistive equipment, tutoring, assistance with access and accommodations for the classroom where appropriate. For information regarding services, students with disabilities should contact the Office of Disability Services in the OC Help Center located in Room 204 of the Saulsbury Campus Center or call 432-335-6861. (Source: *Odessa College Catalog of Courses 2015-2016*, page 52)

Dropping a Course or Withdrawing from College

Students wishing to drop a non-developmental course may do so online using WebAdvisor, at the Wrangler Express, or Registrar's Office. A student wishing to drop a developmental course or withdraw from college should obtain a drop or withdrawal form from the Wrangler Express or

the Registrar's Office. Students are encouraged to consult with instructors prior to dropping a class. Students may not completely withdraw from the college by use of the Web. Students must drop a class or withdraw from college before the official withdrawal date stated in the class schedule. Students who are part of the Armed Forces Reserves may withdraw with a full refund if the withdrawal is due to their being ordered into active duty. A copy of the student's orders must be presented to the Registrar's Office at the time of the withdrawal. For details, please contact the Office of the Registrar. **No longer attending class does not automatically constitute withdrawal from that class, nor does a student's notification to an instructor that the student wishes to be dropped. Failure of a student to complete the drop/withdrawal process will result in a grade of "F."** (Source: *Odessa College Catalog of Courses 2015-2016*, page 36)

Student Support Services and Technical Support

Blackboard Support

I can't log into my Blackboard Course, who do I contact?

Contact the Student Success Center: 432-335-6673 or online at https://www.odessa.edu/dept/ssc/helpdesk_form.htm. The SSC can provide you with your Blackboard login name. If you are not sure what your password is, they can reset your password.

I'm having a problem in my Blackboard Course, who do I contact?

For any problem that you have in your online course, always contact your Instructor first. Refer to the Instructor's Contact Information area of the Syllabus for their preferred method of contact and the expected response time.

Additional Blackboard Help Resources:

Service	Assistance Provided	Available
Blackboard Help for Students	Website with a searchable list of topics on how to navigate and use Blackboard for online courses.	Online Click here.
Blackboard On Demand Learning Center for Students	This website provides an extensive list of short tutorial videos for student activities performed in Blackboard.	Online Click here.
Blackboard Collaborate: First Time Users	If you have never used Blackboard Collaborate before, this website provides a system requirements check, configuration instructions, and training and resources area.	Online Click here.
Blackboard Collaborate: Essentials for Participants	This website provides essential information for Participants of Collaborate sessions. Any Collaborate user, whether first-time or experienced, would benefit from reviewing the information here.	Online Click here.

Student E-mail Support

How do I set up, access, or update my Odessa College Student E-mail account?

Go to this website and follow the directions on the page: <http://www.odessa.edu/gmail/>.

I can't access my student email! I forgot my password!

Contact the Student Success Center: 432-335-6673 or online at https://www.odessa.edu/dept/ssc/helpdesk_form.htm. They can provide you with assistance in accessing your student email (created by OC) and can also assist with resetting your student email password. Make sure to have your student ID number available!

Your Blackboard login name is associated with your OC created student email account. All Correspondence for this course will be submitted using your Odessa College student email address.

Support for Students with Disabilities

How do I contact the Office of Special Populations?

Main Number	432-335-6861
Campus Location	SUB 204N in the Student Union Building
Email	Becky Rivera-Weiss - brivera@odessa.edu
Website	To find out more about services provided by the Special Populations office, please visit: http://www.odessa.edu/dept/counseling/disabilities/index.htm

Learning Resources Center (LRC; Library)

MURRY H. FLY LIBRARY

Main Number	432-335-6640
Email	library@odessa.edu
Campus Location	1 st floor of the Learning Resources Center (LRC)
Website with Additional Help and Information	http://www.odessa.edu/dept/library Ask A Librarian: https://www.odessa.edu/dept/library/askalibrarian.htm

Equipment and Services Provided:

The Murry H. Fly Library, located in the Learning Resources Center, is a full-service academic library whose mission is to provide research and other educational resources to the Odessa College community.

Super Search, the library's centralized search engine, offers easy access locating materials in the library's collection. The following resources are available through the library.

- **Books, Videos, CDs** – 30,000+ books and 4,000+ media holdings

- **Ebooks** – 50,000+
- **Specialized databases** for current students – 60+
*Remote access requires OC login
- **Magazines, newspapers, & scholarly journals**
- **Interlibrary loan services** of material from participating Texas libraries
- **Online Tutorials**
*Tips for research strategies
- **Computers for online research, homework, and printing**
- **Selected textbooks** for short-term use in the library only
- **Photocopier and FAX service** – There is a charge associated with these services
- **VHS/DVDs** – in library use only
- **Quiet study rooms** for individual and group study
*Must check in at the main desk
- **Larger meeting rooms** – for events, educational workshops, and group computer use.
Reservations required

TUTORING SERVICES

Odessa College provides tutoring services to assist students in meeting their academic and career goals. The College strives to provide new and updated resources and services at no charge to OC students. Computers provide Internet access, Microsoft Office, and software resources to assist OC students in improving their reading, writing, and mathematical skills.

Appointments are preferred, but walk-ins are accepted as availability allows. Tutoring services are offered in a number of locations on and off campus. For more information or to make an appointment:

- **Student Success Center**, located in the Learning Resources Center, provides support for a variety of academic subjects as well as TSI test prep, AVID, study skills training, workshops, assistance with Blackboard, student email, OC portal, student orientation tours, and more.

Main Number	432-335-6878
Email	studentsuccesscenter@odessa.edu
Campus Location	1st floor of the Learning Resources Center (LRC)
Website with Additional Help and Information	http://www.odessa.edu/dept/ssc/
Live Online Chat Assistance	Click Here Subject to availability. <i>(If no one is currently available, call or email)</i>

- **Math Lab**, located on the second floor of the Wood Math and Science building, provides support for all math-related tutoring

Math Lab Main Number	432-335-6537
Email	mymathlab@odessa.edu
Campus Location	Wood Math and Science building, Room 201
Website with Additional Help and Information	http://www.odessa.edu/dept/ssc/math_lab.htm Provides support for all math related tutoring

- **Synapse Lab**, located on the third floor of the Wood Math and Science building, provides support for all science-related tutoring

Synapse Lab Main Number	Coming soon
Email	SynapseLab@odessa.edu
Campus Location	Wood Math and Science building, Room 308
Website with Additional Help and Information	http://www.odessa.edu/dept/biology/tutoring.htm Provides support for all science related tutoring

- **Writing Center**, located on the first floor of Wilkerson Hall, provides support for all writing-related tutoring

Writing Center Main Number	Coming soon
Email	writingcenter@odessa.edu
Campus Location	Wilkerson Hall, 106
Website with Additional Help and Information	Coming soon Provides support for writing related tutoring

- **Offsite tutoring services** are available in the Rodeo and Agriculture Graham Center located in Gardendale
- **Online tutoring** is available 24/7 through Upswing, which will start Fall II, a web-based, student-friendly service

Student Success Center (SSC) / AVID Center

How do I contact the Student Success Center?

Appointments are preferred, but walk-ins will be served as soon as possible.

Main Number	432-335-6673
--------------------	--------------

Campus Location	1st floor of the Library
Website with Additional Help and Information	http://www.odessa.edu/dept/ssc/
Live Online Assistance / Chat	Click Here (If no one is currently available, please put your email and question(s) in the appropriate areas of the form and hit 'send.' Your question(s) will be addressed as soon as an SSC staff member becomes available.)

Equipment and Services Provided:

The purpose of the Odessa College Student Success Center is to provide assistance to students in meeting their academic and career goals. The SSC strives to continually provide new and updated resources that will empower all Odessa College students to succeed at OC and beyond.

Equipment/Services Available	Used For	Available
Tutoring by CRLA & Avid trained tutors	Understanding course work and motivation	On Campus and Online Click here for more information.
Student Information Seminars (SIS)	Demo email, Blackboard and SSC resources	On Campus and Online Click here for more information.
Study Skills	Tools needed to succeed	On Campus and Online Click here for more information.
Basic Technology	To navigate classes, email, etc.	On Campus and Online
Plato Web	Practice for TEAS test and basic math, science, etc.	On Campus and Online Click here for more information.
Project T.I.E.	Practice for GED/COMPASS	On Campus and Online Click here for more information.
Student Orientation/Tour	Show individual students where their classes will be. SIS presentation	On Campus
M.O.R.E. Mentoring Program	Networking, tips to navigate college life successfully	On Campus Click here for more information.

Smart thinking	Online tutoring service. Connect with an e-structor and interact with a live tutor.	Online Click here for more information.
----------------	---	--

Veterans Support

How do I contact the office for Veteran's Outreach?

Main Number	432-335-6833
Campus Location	204M (Help Center) in the Student Union Building
Email	Gloria Rangel - grangel@odessa.edu
Website	To find out more about services provided by the Veteran's Outreach office, please visit: http://www.odessa.edu/dept/counseling/veterans/index.htm